

Aargau

Bahnhofstrasse 88
5000 Aarau
T 062 835 52 70
ag.ch

Appenzell Ausserrhoden

Kasernenstrasse 17
9102 Herisau
T 071 353 64 56
ar.ch

Appenzell Innerrhoden

Marktgasse 2
9050 Appenzell
T 071 788 95 23
ai.ch

Basel-Landschaft

Schlossstrasse 1
4133 Pratteln
T 061 552 51 61
baselland.ch

Basel-Stadt

Klybeckstrasse 15
4002 Basel
T 061 267 58 61
sozialhilfe.bs.ch

Bern / Berne

Effingerstrasse 55
3008 Bern
T 031 385 18 11
kkf-oca.ch

Freiburg/Fribourg

Route du Petit-Moncor 1a
1752 Villars-sur-Glâne
T 026 425 41 63
ors-group.org/ors-ch-de

Genève/Genf

9, route des Acacias
1211 Genève 4
T 022 304 04 70
croix-rouge-ge.ch

Glarus

Rain 8
8755 Ennenda
T 055 646 67 83
gl.ch

Graubünden

Grabenstrasse 8
7001 Chur
T 081 257 30 07
gr.ch

Jura

1, rue du 24-Septembre
2800 Delémont
T 032 420 50 00
jura.ch

Luzern

Fruttstrasse 15
6002 Luzern
T 041 228 77 81
migration.lu.ch

Neuchâtel/Neuenburg

Rue Tivoli 28
2002 Neuchâtel
T 032 889 43 08
ne.ch

Nidwalden

Knirigasse 6
6371 Stans
T 041 618 76 23
nw.ch

Obwalden

Bahnhofstrasse 1
6410 Goldau
T 041 859 00 51
caritas.ch

Schaffhausen

Krebsbachstrasse 109
8200 Schaffhausen
T 052 632 71 71
hausderkulturen-sh.ch

Schwyz

Bahnhofstrasse 1
6410 Goldau
T 041 859 00 51
caritas.ch

Solothurn

Riedholzplatz 3
4509 Solothurn
T 032 627 84 36
so.ch

St. Gallen

Oberer Graben 38
9001 St.Gallen
T 058 229 65 09
sg.ch

Thurgau

Multiplex 1
Langfeldstrasse 53a
8510 Frauenfeld
T 058 345 66 55
migrationsamt.tg.ch

Ticino/Tessin

Via Lugano 4
6501 Bellinzona
T 091 814 55 05
ti.ch

Uri

Bahnhofplatz 1
6460 Altdorf
T 041 874 09 80
redcross.ch

Valais/Wallis

Place du Midi 40
1950 Sion
T 027 606 18 95
vs.ch

Vaud/Waadt

Av. de Beaulieu 23
1004 Lausanne
T 021 316 97 55
vd.ch

Zug

Bahnhofstrasse 1
6410 Goldau
T 041 859 00 51
caritas.ch

Zürich

Röntgenstrasse 22
8090 Zürich
T 043 259 52 95
zh.ch

sem.admin.ch
switzerland.iom.int

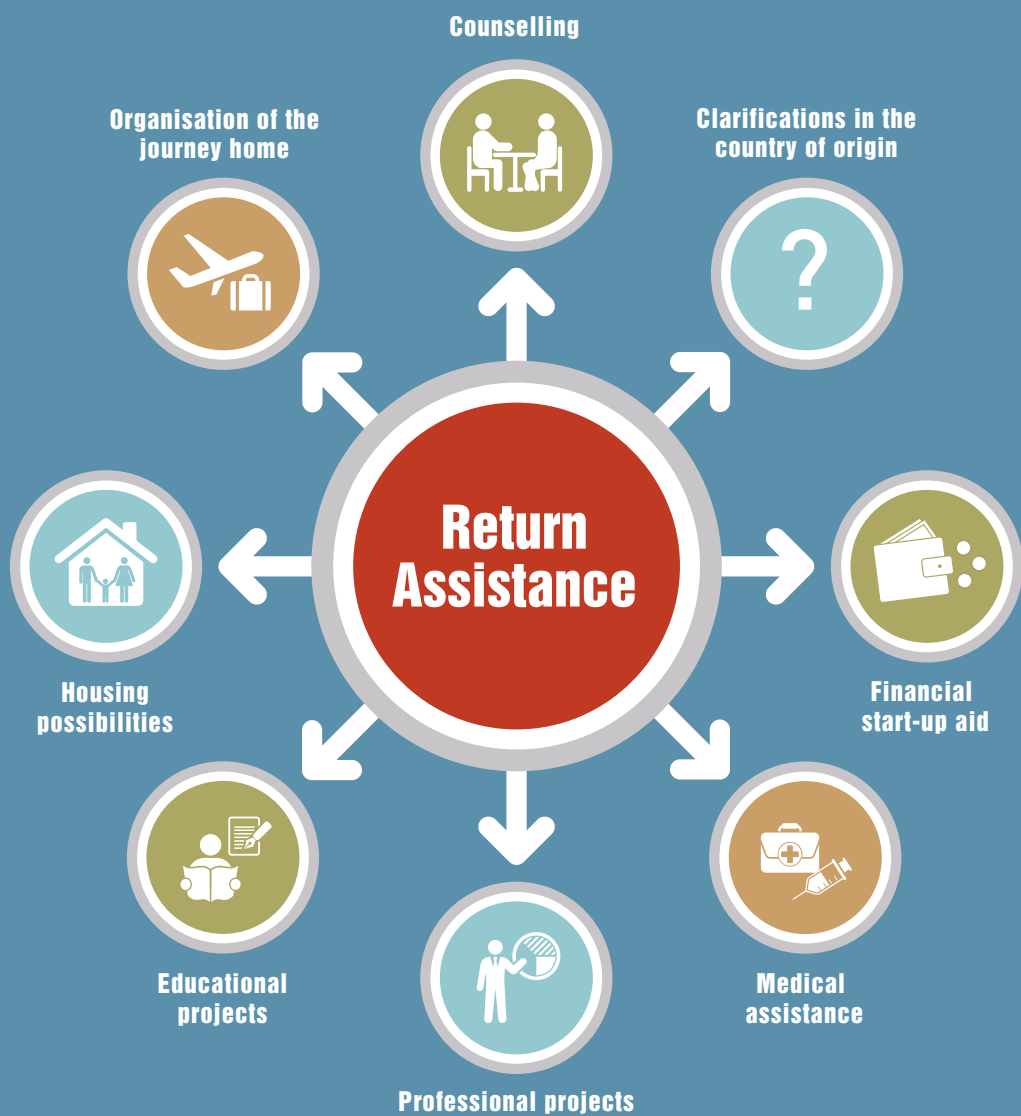


 Return Assistance

Return Assistance:
a change of perspective.



 Return Assistance



What is return assistance?

The return assistance supports you in returning to your country of origin. It facilitates your new start and improves the chances of a successful reintegration.

What is return counselling?

The return counselling informs you non-binding and confidentially on the return assistance and has no influence on still

pending proceedings. The return counselling supports you in the preparation and organisation of your return.

Who can receive return assistance?

The return assistance is open to all asylum seekers who want to return voluntarily to their countries of origin. Recognized refugees can also receive return assistance.

When and how?

You can apply for return assistance both during and after the completion of the asylum proceedings.

Where is the return counselling?

You can find the address and the telephone number of your return counselling centre on the next page.